

On: Power on and also pause button (press during any light mode to pause)

Auto: Activates Demo mode and will scroll through all 63 light modes

S+ / S-: Speed Control increase or decrease the speed of color changes 10 levels of speed

M+ / M-: Manually scroll through 63 light modes

Brightness Control: Increase and decrease level of brightness 32 levels of brightness

In the event that you have multiple signs or experience interference from another remote controlled device you can pair your remote with your sign by powering on sign and holding the pink key for 5 seconds until sign blinks.

Once paired your remote will only function with that sign..

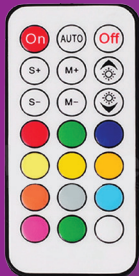
In the event that your lights become out of sequence with your remote please follow these instructions:

Press the OFF key then AUTO key to enter set-up mode.

While in set up mode press the blue key once then press the OFF key.

Press ON key and press in order RED, GREEN, BLUE color keys.

If any of these keys show a different color than the one pressed repeat the steps above until sequence is correct.



Remote requires 1x  
CR2025 battery included

IMPORTANT: Do not place frame near any heat source that may exceed 140°F